



YAWiD electronics GmbH

Richard-Strauss-Strasse 2
82194 Gröbenzell·Germany

Zöllners Garten 1
30900 Wedemark·Germany

Tel. +49 8142 66 710 33
Fax +49 8142 66 710 34

Tel. +49 5130 58 52 69 0
Fax +49 5130 58 52 69 1

www.yawid.com

info@yawid.com



PLS8



Five Band LTE
Tri Band UMTS/
DC-HSPA+



LTE voice
support



GPRS/EDGE
Quad/Dual Band



GPS / A-GPS /
GLONASS



Multi Design
Capability (LGA)



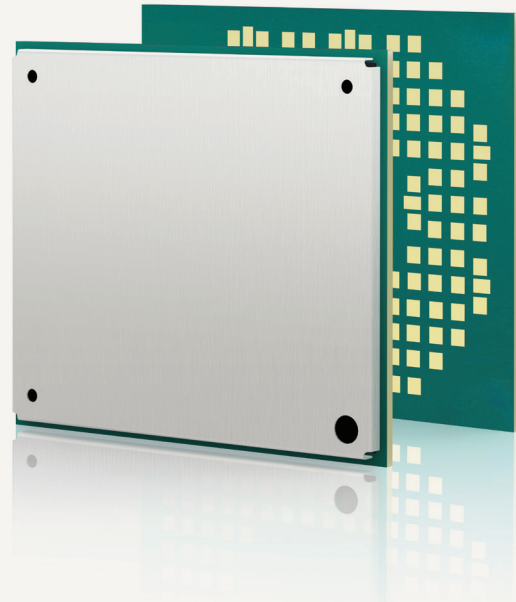
Extended
Temperature
Range



USB 2.0



Multi OS support



LTE

Cinterion® PLS8 Wireless Module
First Industrial 4G LGA Module in the Market

Cinterion® PLS8 Wireless Module

First Industrial 4G LGA Module in the Market

The new Gemalto Cinterion PLS8 LTE cellular machine-to-machine (M2M) module offers a smart solution for wireless connectivity today and in the future. With the newest 3GPP Rel. 9 LTE technology, PLS8 is optimized for high bandwidth computing, enabling speeds up to 100 Mbps for downlink and 50 Mbps for uplink.

PLS8 and its variants, PLS8-E and PLS8-US, provide world-wide coverage and reliability even while roaming across different wireless networks. For investment protection, PLS8 supports multi designs due to footprint compatibility with Gemalto M2M's 3G/GSM and CDMA Cinterion modules PHS8 and PXS8/PVS8.

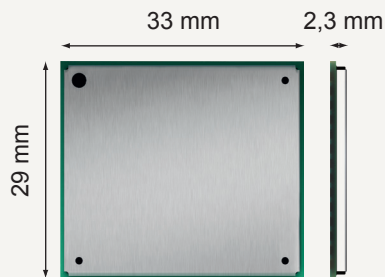
PLS8 offers an ideal communication solution for the challenging requirements of a variety of M2M applications such as ruggedized mobile computing, security solutions, medical equipment, payment systems and gateway routers.

Two antenna pads enable diversity support allowing PLS8 to provide improved data speeds. An optimized GPS antenna path eliminates blanking on GPS and provides more consistent performance.

Gemalto M2M's unique type of LGA technology enables optimized heat dissipation that prevents warping and gives customers the freedom to select the most beneficial soldering paste for each individual application.

Like all Cinterion products, the PLS8 comes with full type approval (FTA) and is certified by the largest global network operators.

First Industrial 4G LGA Module in the Market



Future Proof Design

At just 2,3 mm in height, PLS8 is ideal for integration in the slimmest and most size constrained M2M solutions. With the latest long-life chipset and a footprint prepared for forthcoming modules, PLS8 provides longevity and a reliable path to the future for any high-bandwidth M2M application.

Multi Design Capability

The unique PLS8 footprint, based on LGA technology, offers seamless migration from 3G GSM to CDMA to LTE within a single design footprint. Compatibility with the world's first M2M grade LTE wireless module ensures future-proof design and longevity of M2M applications.

Improved Power management

PLS8 features advanced power management technology to preserve battery power necessary for remote M2M devices and to reduce heat generation.

Gemalto M2M Support includes:

- > Personal design-in consulting for hardware and software
- > Extensive RF test capabilities
- > GCF/PTCRB conform pretests to validate approval readiness
- > Regular training workshops



Local engineers, a competent helpdesk, a dedicated team of R&D specialists and an advanced development center are the hallmarks of our leading support offer.

Cinterion® PLS8

GENERAL FEATURES

- > PLS8-E:
Five Band LTE: 800/900/1800/2100/2600 MHz, FDD-Band (20,8,3,7,1)
Tri Band UMTS (WCDMA): 900/1800/2100 MHz, FDD-Band (8,3,1)
Dual Band GSM/GPRS/EDGE: 900/1800 MHz
- > PLS8-US
Quad Band LTE: 700/850/AWS (1700/2100)/1900 MHz, FDD-Band (17,5,4,2)
Tri Band UMTS (WCDMA): 850/AWS (1700/2100)/1900 MHz, FDD-Band (5,4,2)
Quad Band GSM/GPRS/EDGE: 850/900/1800/1900 MHz
- > LTE (FDD 3GPP Release 8/9
2x2 DL-MIMO
- > UMTS/HSPA (FDD) 3GPP Release 8
Rx diversity
- > GSM/GPRS/EDGE 3GPP Release 6
DARP/SAIC
- > SIM Application Toolkit, 3GPP release 99
- > Control via AT commands (Hayes, TS 27.007, TS 27.005)
- > Fully integrated GPS/GLONASS solution (Qualcomm gpsOne Gen8A)
- > Supply voltage range 3.3 - 4.2 V, highly optimized for minimal power consumption
- > Dimension: 29 × 33 × 2,3 mm
- > Operating Temperature Range: -40 °C to +85 °C
- > RoHS and REACH compliant, EuP support

SPECIFICATIONS

- > LTE Cat. 3
DL: max. 100 Mbps, UL: max. 50 Mbps, 2x2 DL MIMO
- > HSPA+ DL Cat.24 / UL Cat. 6, Dual Carrier
DL: max. 42 Mbps, UL: max. 5.76 Mbps
- > EDGE Class 12 data rates
DL: max. 237 kbps, UL: max. 237 kbps
- > GPRS Class 12 data rates
DL: max. 85.6 kbps, UL: max. 85.6 kbps
- > Voice Support (HR, FR, EFR, AMR narrowband & AMR wideband)
- > Handsfree speaking
- > Voice Support for LTE via CSFB (circuit-switched fall-back), prepared for VoLTE
- > Supplementary services & USSD support
- > SMS text and PDU mode

SPECIAL FEATURES

- > USB interface supports multiple composite modes and a Linux-/Mac- compliant mode
- > Firmware update via USB
- > BIP (Bearer Independent Protocol)

GPS/GLONASS FEATURES

- > Standalone GPS and GLONASS
- > GNSS dedicated AT commands
- > A/GPS support: standalone, XTRA®, CP E911
- > Protocol: NMEA-0183 V2.3
- > Option for temporary NMEA stream buffering
- > Tracking Sensitivity: better than -158 dBm

INTERFACES

- > 156 pad LGA mount
- > Pads for primary, secondary Antenna and GNSS
- > Digital audio interfaces (PCM or I2S)
- > USB 2.0 HS interface up to 480 Mbps
- > UICC and U/SIM card interface 1.8 V and 3 V
- > Serial Interface (UART)
- > 10 GPIOs shared with Network Status and Low Current Indication, 2 ADCs

DRIVERS

- > NDIS/USB driver for Microsoft® Windows Vista™, Windows 7™ and Windows 8™
- > USB driver for Microsoft® Windows Embedded Compact™
- > RIL driver for devices based on Android OS™
- > CDC-ACM compliant mode for Linux

APPROVALS

- > GCF, R&TTE, PTCRB, FCC, UL
- > GCF, PTCRB
- > AT&T
- > Other local approvals and certifications on request

For more information, please visit

m2m.gemalto.com, developer.gemalto.com, www.facebook.com/gemalto,
or Follow @gemaltom2m on twitter.

The information provided in this brochure contains merely general descriptions or characteristics of performance, which in case of actual use do not always apply as described or which may change as a result of further development of the products. An obligation to provide the respective characteristics shall only exist if expressly agreed in the terms of contract. All product designations may be trademarks or product names of Gemalto M2M GmbH or supplier companies whose use by third parties for their own purposes could violate the rights of the owners. Oracle and Java are registered trademarks of Oracle and/or its affiliates. Other names may be trademarks of their respective owners. ARM9 is a registered trademark of ARM Limited.

Gemalto M2M GmbH
St.-Martin-Str. 60
81541 Munich
Germany



➔ M2M.GEMALTO.COM

